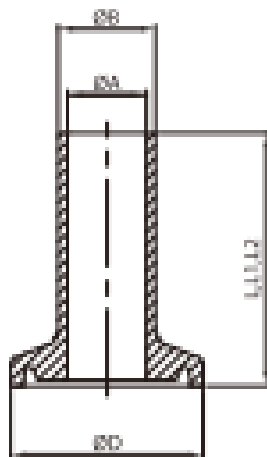
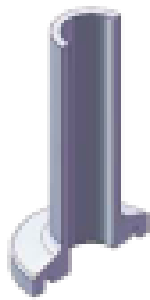


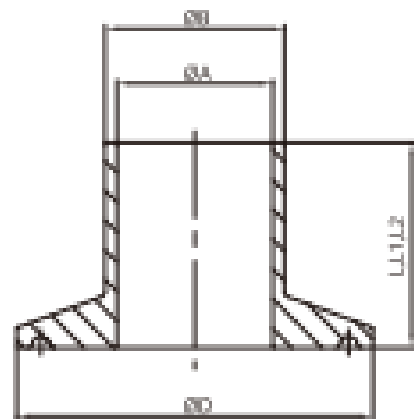
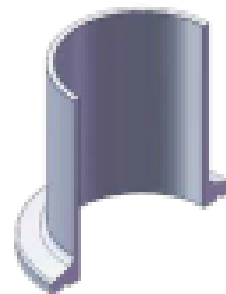
(Type A)

1/2"~1"



(Type B)

1"~6"



DT-4.1.4-1WELD FERRULE (DT-22)

TYPE	SIZE	ϕA	ϕB	ϕD	L	L1	L2
A	1/4"	4.6	6.35	25	12.7	28.7	44.5
	3/8"	7.25	9.53	25	12.7	28.7	44.5
	1/2"	9.4	12.7	25	12.7	28.7	44.5
	3/4"	15.75	19.05	25	12.7	28.7	44.5
	1.0"	22.1	25.4	34	12.7	28.7	44.5
B	1.0"	22.1	25.4	50.4	12.7	28.7	44.5
	1.5"	34.8	38.1	50.4	12.7	28.7	44.5
	2.0"	47.5	50.8	63.9	12.7	28.7	57.2
	2.5"	60.2	63.5	77.4	12.7	28.7	57.2
	3.0"	72.9	76.2	90.9	12.7	28.7	57.2
	4.0"	97.4	101.6	118.9	15.9	28.7	57.2
	6.0"	146.9	152.4	166.9	19.1	38.1	76.2